

LIFE PROCESSES AND LIVING THINGS:

This pack consists of a collection of 24 screens giving a range of activities on living things, including sorting animals and plants, naming the main parts of the human body, food, habitats, the main parts of flowering plants and growing seeds. See the section on 'The pack and the curriculum' for more details.

THE OPENING SCREEN:



The opening screen provides a choice of buttons. The buttons link to the main topic areas which may be opened in any order.

1. Click on this button for an activity on alive and not alive.
2. Click on this button for information about the buttons used on the screens.
3. Click on this button for an activity on flowering plants
4. Click on this button for an activity on the body.
5. Click on this button for an activity on the senses.
6. Click on this button for an activity on growing seeds.
7. Click on this button for an activity on grouping living things.
8. Click on this button for an activity on food.
9. Click on this button for an activity on the life cycle of a frog.

CONTENTS:

Children should be encouraged to click the mouse on the various buttons and on text and graphics with speech support.

1. Alive and not alive - drag the pictures into the appropriate boxes.
2. Alive and not alive - drag the pictures into the appropriate boxes.
3. Animals and plants - drag the pictures into the appropriate boxes.
4. Animals and plants - drag the pictures into the appropriate boxes.

5. The life cycle of a frog - drag the pictures into the appropriate boxes.
6. Parts of the body - label the main parts of the body.
7. Parts of the head - label the main parts of the head.
8. Alike and not alike - an open ended exercise - sorting according to features.
9. Alike and not alike - match the animal pictures.
10. Growing up - match the young animals and adults.
11. Inside the body - remove and replace the parts then label them.
12. The senses - label the sense organs.
13. Food - group foods into healthy, fatty and sweet food.
14. What shall we eat? - choose items of food - an open ended exercise.
15. Menu - making up a menu - an open ended exercise.
16. A flowering plant - remove and replace the parts then label them.
17. Growing seeds - put pictures in the right order.
18. Growing a bulb - put pictures in the right order.
19. Growing a plant - put pictures in the right order.
20. Getting ready to grow a bean seed - put pictures in the right order.
21. Growing a bean seed - put pictures in the right order.
22. Grouping living things - drag similar organisms into the boxes.
23. Grouping living things - in the garden, at the seaside.
24. Design a new screen - an open ended exercise with several options.

THE SCREENS: The screens provide a variety of activities including dragging, labelling, sorting and investigative activities. Many may lead to related classroom activities such as 'hands on' practical work.

The screens are deliberately basic and uncluttered where appropriate with hidden popups / panels providing additional information, graphics and support.

Children may add to the screens by using the word banks. They may follow the instructions provided on clicking the task button or modify the screens according to their needs. They may check the answer using the answer button and use the arrows to move back and forth between screens.

All the screens have associated word or picture panels or both which are accessed via buttons. They also have task and answer panels.

Real speech is used in the My World format. Software speech is used in the Textease format. Click on the text, speech icons or hot spots where appropriate to hear it spoken.

MY WORLD AND TEXTEASE FORMATS:

This pack requires My World for Windows, My World 3 or Textease to run. Both formats are provided on the CD leaving the choice to the teacher.

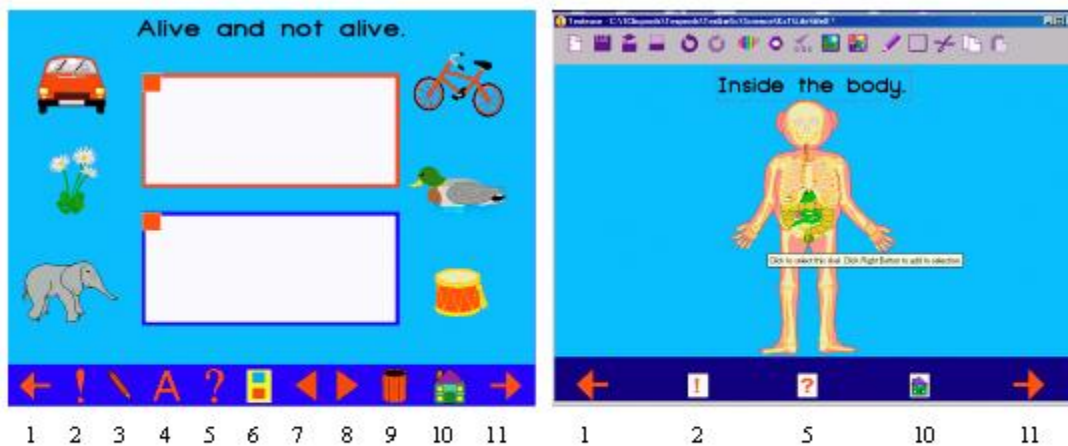
The My World format of the software self installs - the Textease format must be copied onto the hard disk manually. The My World installer installs the Welsh font Ysgol 2. -

Textease users should install 'Ysgol 2' by double clicking on the fonts folder and following the instructions on the screen.

My World and Textease screens do not self correct. Some teachers may see this as a disadvantage. The advantages however is that children are given an opportunity to make their own minds up or discuss their ideas with others. Their outcome may be printed allowing My World and Textease screens to be used for assessment where appropriate.

THE BUTTONS ON THE SCREENS:

The buttons are listed from left to right and the My World and Textease formats of two different screens are shown below.



MY WORLD FORMAT

TEXTEASE FORMAT

1. The back button - click on this to go to the previous screen.
2. The task button - click on this to hear the task.
3. The text button - click on this to create new text.
4. The word button - click on this for a word list.
5. The help button - click on the hot spots or pictures within the help panel.
6. The resource button - click on this for some useful pictures.
7. The scaling down button - click text or graphics on this to reduce their size.
8. The scaling up button - click text or graphics on this to increase their size.
9. The bin - click text or graphics on this to delete them.
10. The home button- click on this to return to the opening screen.
11. The forward button - click on this to advance to the next screen.

See the Textease handbook for the functions of the buttons on the top bar.

THE PACK AND THE CURRICULUM: The pack supports many of the National Curriculum requirements for Key Stage 1 relating to Life processes and living things. The programs of study which are covered are:

SC2 Life processes and living things:

- 1a: differences between things that are living and things that have never been alive.
- 1b: that animals use their senses.
- 2a: recognise and compare the main external parts of the bodies of humans:
- 2b: that eating the right types and amounts of food help humans keep healthy.
- 2f: that humans and other animals can produce offspring and that these offspring grow into adults..
- 2g: about the senses that enable humans and other animals to be aware of the world around them.
- 3a: plants need light and water to grow.
- 3b: recognise and name the leaf, flower, stem and root of flowering plants..
- 3c: that seeds grow into flowering plants.
- 4a: recognise similarities and differences between themselves and others.
- 4b: group living things according to observable similarities and differences.
- 4b: group things according to observable similarities and differences.

THE GRAPHICS:

The graphics used are simple purpose made vector drawings for three reasons:

- a) most are basic enough for children to copy them on paper where appropriate.
- b) they support the program without being a distraction in themselves.
- c) they require less memory than more sophisticated graphics / illustrations.

INCLUSION:

The screens are deliberately basic and uncluttered with hidden popups / panels providing additional information, graphics and support. Teachers / pupils are able to customize and save the screens if required.

Generally speaking, there is little visible text other than the headings on the screens. This reduces the amount of initial explanation / signing required on introducing a new topic to pupils with hearing problems.

Visually impaired pupils may resize moveable text or graphics using the maximize / minimize buttons in the My World format or by selecting then dragging one of the corners' in the Textease format.

The My World format has real speech support the Textease format of the software has software speech support.

ABILITY RANGE / DIFFERENTIATION: The screens have been designed for use by children of different abilities. Buttons allow them to seek help or further information, so the older / more able pupils may work independently.

Children may drag labels and other information to the screens or write their own text. They may use their imagination and customise existing screens or use the self design screens (see 'Teacher Control' below).

SUPPORT: The help button opens a support panel, which may be shared by several screens within the same topic area. The support may be in diagram or text form and clicking on hot spots within the help panel may open text windows or further help panels.

TEACHER CONTROL:

At first sight, the screens may not appear to have a great deal of teacher control. However, any moveable object on a screen, be it text or graphic may be deleted or enlarged, and new text may be added. The customized screen may be renamed and saved for future use.

The final screen provides an opportunity for the teacher / pupil to create new screens. This is more comprehensive in the My World format where there is a choice of 6 topic areas - frogs, food, the body, habitats, alive and plants.

INTERACTIVE WHITEBOARDS:

The screens in this pack have been redesigned for more efficient use with Interactive Whiteboards and are ideal for individual or group work and whole class teaching.

FORMATS: The pack includes the screens in MY WORLD format and TEXTEASE format plus the Welsh font 'YSGOL 2'.

The MY WORLD format requires My World for Windows or My World 3.
The TEXTEASE format requires Textease.

INSTALLATION: The My World format self installs. Textease users must copy the LifeTex folder to the hard drive, then create a shortcut on the desktop to the opening file - 1Life.

FONTS: The Welsh font Ysgol 2 has been used on the screens by kind permission of the 'Micro-electronics in Education Unit for Wales' (MEU). www.meu.cymru.co.uk

The My World installer should install 'Ysgol 2. Textease users should click on the exe. file within the Fonts folder and follow the instructions to install 'Ysgol 2.

TECHNICAL SUPPORT:

Please contact Clic if you have any problems with the content of this program. Consult the My World help files for problems in running My World. Consult the Textease manual / help files for problems in running Textease.

PRICE AND LICENCE:

Prices and licences are subject to change without warning. Please check the details on our web site before ordering.

RELATED PRODUCTS:

Life processes and living things is part of the 10 pack **Clic Science Series**.

Other titles in the series are

KS1 Physical processes.

KS1 Homes and houses (materials and scientific enquiry).

KS2 Humans as organisms is

KS2 Green plants as organisms.

KS2 Living things in their environment.

KS2 Materials and their properties.

KS2 Forces and motion.

KS2 Light, sound & the Earth and beyond.

KS2 Electricity and power.

These packs are available individually or as two collections:

KS1 Starting science.

KS2 More science

FURTHER INFORMATION: SCREENS AND GRAPHICS BY GAYNOR PERRY

CLIC, BWTHYN Y GLYN, NANT Y GARTH, Y FELINHELI, GWYNEDD. LL56 4QB

SOURCE OF INFORMATION GAYNOR PERRY. (from over 30 years teaching Secondary School Science in most of its subject areas and Biology to A level, including 20 years as a Biology A level Examiner).

IMPORTANT: The contents of the pack may not be copied or distributed to another individual or centre. Doing so would breach copyright and be illegal.

FINALLY, YOUR FEEDBACK IS IMPORTANT TO US. PLEASE TELL OTHERS IF YOU LIKE OUR PRODUCTS. PLEASE TELL US WHAT YOU LIKE OR DON'T LIKE ABOUT OUR PRODUCTS.

Original version 1999

New version 2002 - 2003

© Clic (Clicsoft)

