

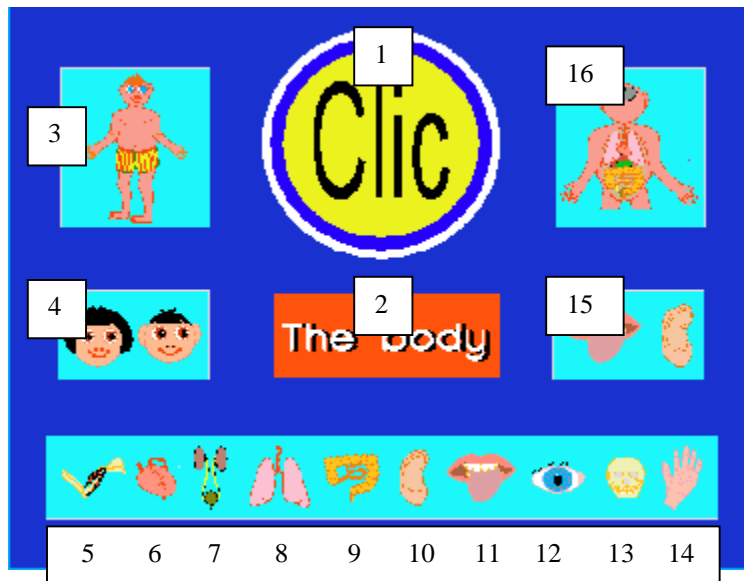
THE BODY:

A collection of screens to support literacy for ages 4 - 7 or second language learners. Topics include facial features, labelling the main parts of the body, the main internal organs (not sex organs) and information screens on parts of the body and how they work.

The pack includes a wide range of spoken and written vocabulary and may be used with or without the word banks accessed via the word bank icon on the tool bar.

Real speech is used throughout. Click the text on the screen or click on the speech icon / graphics within the word bank to hear the words spoken.

THE OPENING SCREEN:



The opening screen provides a choice of buttons. The buttons link to the main topic areas which may be opened in any order.

1. Click on this button for an activity on the skeleton.
2. Click on this button for information about the buttons used on the screens.
3. Click on this button for a labelling activity.
4. Click on this button for an activity on facial features.
5. Click on this button for an information screen on moving the arm.
6. Click on this button for an information screen on the heart.
7. Click on this button for an information screen on the kidneys and bladder.
8. Click on this button for an information screen on the lungs and breathing.
9. Click on this button for an information screen on digesting food.
10. Click on this button for an information screen on the ear and hearing.

11. Click on this button for an information screen on taste and smell.
12. Click on this button for an information screen on the eye and sight.
13. Click on this button for an information screen on the skeleton.
14. Click on this button for an information screen on the skin and touch.
15. Click on this button for an activity on the main parts of the body.
16. Click on this button for an activity on the internal parts of the body.

CONTENTS:

Children should be encouraged to click the mouse on the various buttons and on text and graphics with speech support.

The screens are listed under the main categories of the pack and may be opened in any order.

FACIAL FEATURES:

A series of simple questions - Who has blue eyes? --short hair? and so on. Clicking on the correct answer advances to the next task. An incorrect response opens a 'Try again' window – (see THE SCREENS below).

EXTERNAL PARTS OF THE BODY:

A series of labelling activities – labelling the body, head, arm, hand and leg. The screens are in pairs – the first can be used to teach children the names and positions of the parts, the second can be used for assessment.

In the My World format, the first of each pair has grey text in the boxes. Children may drag the corresponding word from the word panel over this grey text or type their own words using the text button. They may click on the arrows to hear the names of the parts.

The Textease format has simple animation. Children may click on the word then watch it glide to the correct place. They may click on the arrows to hear the names of the parts.

The second screen in both formats requires children to label the parts without visual help – again by using the prepared text in the word panel or by typing their own text. They may click on the arrows to hear the names of the parts.

INTERNAL PARTS OF THE BODY:

Apart from 2) below, these are a series of simple informative screens about the different parts of the body. In the My World format, the hot spots 'speak' the information. In the Textease format, the corresponding text appears as the words are spoken.

1. Inside the body - click on the parts to hear their names. Click on the hot spots for some facts.

2. Inside the body - move the parts to the correct places.
3. Parts of the skeleton. Click on the hot spots for some facts.
4. Seeing things. Click on the hot spots for some facts.
5. Hearing things. Click on the hot spots for some facts.
6. Taste and smell. Click on the hot spots for some facts.
7. Feeling things. Click on the hot spots for some facts.
8. How the heart works. Click on the hot spots for some facts.
9. Breaking food down. Click on the hot spots for some facts.
10. Breathing. Click on the hot spots for some facts.
11. Making wee. Click on the hot spots for some facts.
12. Moving the arm. Click on the hot spots for some facts.

WHAT THE PARTS DO:

A series of simple questions - Which one hears? --pumps blood? --walks? and so on. Clicking on the correct answer advances to the next task. An incorrect response opens a 'Try again' window – (see THE SCREENS below).

THE SCREENS:

The screens provide a variety of activities including dragging, labelling, sorting and reasoning tasks. Many may lead to related classroom activities. The screens are deliberately basic and uncluttered hidden popups / panels providing text if required.

Children may add to the screens by using the word banks. They may follow the instructions provided on clicking the task button where appropriate with and use the arrows to move back and forth between screens.

Software speech is used in both format. Click on the text, speech icons or graphics where appropriate to hear it spoken.

The 'QUESTION SCREENS' are very simple with large clear graphics and a single line of text. Software speech is used in both formats. Click on the text or speech icons to hear the instructions. Pupils must make the correct response to advance to the next screen. An incorrect response opens the 'Try again' window below. In the Textease format, a bell rings to as the 'Try again' window opens.



MY WORLD AND TEXTEASE FORMATS:

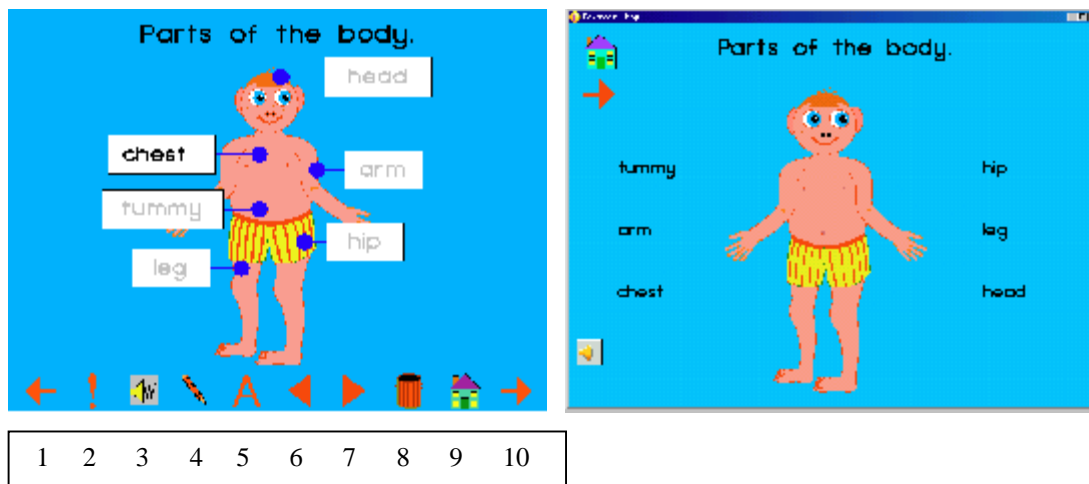
This pack requires My World for Windows, My World 3 or Textease to run. Both formats are provided on the CD leaving the choice to the teacher.

The My World format of the software self installs - the Textease format must be copied onto the hard disk manually. The My World installer installs the Welsh font Ysgol 2. - Textease users should install 'Ysgol 2' by double clicking on the fonts folder and following the instructions on the screen.

My World and Textease screens do not self correct. Some teachers may see this as a disadvantage. The advantages however is that children are given an opportunity to make their own minds up or discuss their ideas with others. Their outcome may be printed allowing My World and Textease screens to be used for assessment where appropriate.

THE BUTTONS ON THE SCREENS:

The buttons on the My World format (left) and Textease format (right) of the same screen are shown below. Note that these buttons are not found on all the screens.



The buttons on the My World format are listed from left to right and described below. See the Textease handbook for the functions of the buttons on the top bar of the Textease format screens.

1. The back button - click on this to go to the previous screen.

2. The task button - click on this to hear a suggested task.
3. The sound button - click on this to hear the screen title.
4. The text button - click on this to create new text.
5. The word button - click on this for a word list.
6. The scaling down button - click text or graphics on this to reduce their size.
7. The scaling up button - click text or graphics on this to increase their size
8. The bin - click text or graphics on this to delete them.
9. The home button - click on this to return to the opening screen.
10. The forward button - click on this to go to the next screen.

THE PACK AND THE CURRICULUM:

The pack is designed to encourage children to speak, listen, understand, respond to others, learn scientific terms and to take part in group discussions. This is within the familiar context of parts of the body and the similarities and differences between themselves and other children.

THE GRAPHICS:

The graphics used are simple purpose made vector drawings for three reasons:

- a) most are basic enough for children to copy them on paper where appropriate.
- b) they support the program without being a distraction in themselves.
- c) they require less memory than more sophisticated graphics / illustrations.

INCLUSION:

The screens are deliberately basic and uncluttered with hidden popups / panels providing labels where appropriate. Teachers / pupils are able to customize and save the screens if required. The high graphic content of both the screens and word panels helps to overcome language barriers, making the pack suitable for mainstream, special needs or second language pupils.

Generally speaking, there is little visible text other than the headings on the screens. This reduces the amount of initial explanation / signing required on introducing a new topic to pupils with hearing problems.

Visually impaired pupils may resize moveable text using the maximize / minimize buttons in the My World format or by selecting then dragging one of the corners' in the Textease format.

The facial features screens support inclusion of ethnic minorities.

ABILITY RANGE / DIFFERENTIATION:

The 'questions' screens cannot be changed. Others allow children to drag labels to the screens or write their own text. They may use their imagination and customise some of the existing screens.

TEACHER CONTROL:

At first sight, the screens may not appear to have a great deal of teacher control. However, any moveable object on a screen, be it text or graphic may be deleted or enlarged, and new text may be added. The customized screen may be renamed and saved for future use.

INTERACTIVE WHITEBOARDS:

The screens in this pack have been redesigned for more efficient use with Interactive Whiteboards and are ideal for individual or group work and whole class teaching.

FORMATS:

The pack includes the screens in MY WORLD format and TEXTEASE format plus the Welsh font 'YSGOL 2'.

The MY WORLD format requires My World for Windows or My World 3.
The TEXTEASE format requires Textease.

INSTALLATION:

The My World format self installs. Textease users must copy the BodyTex folder to the hard drive, then create a shortcut on the desktop to the opening file – 1Body.

FONTS:

The Welsh font Ysgol 2 has been used on the screens by kind permission of the 'Micro-electronics in Education Unit for Wales' (MEU). www.meu.cymru.co.uk

The My World installer should install 'Ysgol 2. Textease users should click on the exe. file within the Fonts folder and follow the instructions to install 'Ysgol 2.

TECHNICAL SUPPORT:

Please contact Clic if you have any problems with the content of this program. Consult the My World help files for problems in running My World. Consult the Textease manual / help files for problems in running Textease.

PRICE AND LICENCE:

Prices and licences are subject to change without warning. Please check the details on our web site before ordering.

RELATED PRODUCTS:

The body is part of the 3 pack 'Good foundations' series.

Other titles in the series are

Foundation: Click and choose
KS1: Houses and their contents

These packs are available individually or as the Good Foundations collection.

FURTHER INFORMATION:

Screens and graphics by GAYNOR PERRY.

CLIC, BWTHYN Y GLYN, NANT Y GARTH, Y FELINHELI, GWYNEDD. LL56 4QB

Tel: 01248 671093 Fax: 01248 679295 email: info@clisoft.co.uk

SOURCE OF INFORMATION GAYNOR PERRY

Original version 1999

New version 2002 - 2003

© Clic (Clicsoft)

IMPORTANT:

The contents of the pack may not be copied or distributed to another individual or centre. Doing so would breach copyright and be illegal.

www.clicsoft.co.uk

FINALLY, YOUR FEEDBACK IS IMPORTANT TO US. PLEASE TELL OTHERS IF YOU LIKE OUR PRODUCTS. PLEASE TELL US WHAT YOU LIKE OR DON'T LIKE ABOUT OUR PRODUCTS.

